

PRIMA LED



BIM
ready

... dustproof, waterproof and impact-resistant.

USE

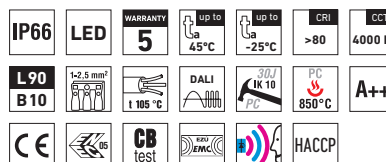
The light fitting is suitable for industrial indoor and outdoor roofed spaces, warehouses, sports areas, workshops, garages, transport terminals, utility structures and laboratories without a danger of explosion of gas, dust and combustible fumes.

The light fitting is resistant to dust, moisture and spouting water. The body and the diffuser made of polycarbonate (PC) have the increased resistance against deformation and impact.

(It is necessary to consider exhalation in the air which can reduce the usability of the plastic at installations in an aggressive environment, see also page 167).

ADVANTAGES

- Light fitting protection **IP66**
- Maximum ambient temperature up to **t_a = 45 °C**
- Lifetime: 50,000 hours / L90B10
- Diffuser: translucent polycarbonate (PC) = high mechanical resistance
- Body: grey polycarbonate (PC) = high mechanical resistance
- Up to 45 % lower electricity consumption when compared to tubes T5
- In DALI version possibility of constant luminous flux for whole lifetime (CLO)
- Constant luminous flux even in ambient temperature of -25 °C
- Standard model - CRI > 80: 4000 K
- At request CRI > 80: 3000 K, 5000 K, 6500 K, CRI > 90: 3000 K, 4000 K
- It can be delivered in dimmable or emergency version
- Certification: ESĈ, ENEC, CB, HACCP



PRIMA LED PC, PCc



TECHNICAL DESCRIPTION

- Light fitting protection: IP66
- Maximum ambient temperature: $t_a = 45^\circ\text{C}$, Maximum ambient temperature: $t_a = 25^\circ\text{C}$ (version with emergency back-up source for 1 or 3 hours; M1h, M3h)
- Maximum system efficacy: 134 lm/W
- The watt and lumen values can vary by $\pm 7,5\%$
- Standard model - CRI > 80: 4000 K
- Lifetime: 50,000 hours / L90B10
- Diffuser: translucent polycarbonate (PC), UV stable, impact-resistant
- Body: grey polycarbonate (PC), UV stable, impact-resistant
- Reflector: steel sheet, white colour (RAL 9003)
- Clips: polyamide + 15 % glass fibre or stainless steel + polyamide
- Sealing: polyurethane (PUR), foamed body groove
- Cable glands: screwed PG 13.5, or rubber (SBS)
- Distance part: polyamide + 10 % glass fibre
- Terminal block: screwless, three-pole (basic version), or screwed
- Installation: package contains stainless hooks and stainless brackets
- Electric equipment: LED modules, current driver or current driver DALI

Code	Type	Max. ambient temperature [°C]	Luminous flux of LED modules [lm]	Luminous flux of light fitting [lm]	Power consumption [W]	System efficacy [lm/W]	Net weight [kg]	A [mm]	D [mm]
For ambient temperature $t_a = 45^\circ\text{C}$ - body: grey polycarbonate - diffuser: translucent polycarbonate									
65010	PRIMA LED 1.2ft PC 1300/840	45	1300	1260	10	126	1,3	662	350
65020	PRIMA LED 1.2ft PC 1600/840	45	1600	1510	12	126	1,2	662	350
65030	PRIMA LED 1.2ft PC 2200/840	40	2200	1950	15	130	1,3	662	350
65040	PRIMA LED 1.4ft PC 2600/840	45	2600	2320	18	129	1,9	1272	700
65050	PRIMA LED 1.4ft PC 3200/840	45	3200	2860	22	130	1,7	1272	700
65060	PRIMA LED 1.4ft PC 4400/840	40	4400	3920	30	131	1,9	1272	700
65460	PRIMA LED 1.4ft PC 6400/840	40	6400	5650	43	131	1,9	1272	700
65070	PRIMA LED 1.5ft PC 3250/840	45	3250	2810	22	128	2,3	1572	940
65080	PRIMA LED 1.5ft PC 4000/840	45	4000	3530	27	131	2,2	1572	940
65090	PRIMA LED 1.5ft PC 5500/840	40	5500	4940	37	134	2,3	1572	940
65490	PRIMA LED 1.5ft PC 8000/840	40	8000	7090	54	131	2,3	1572	940

65020 PRIMA LED 1.2ft PC 1600/840 = suitable replacement for T8 fl. tube light fitting PRIMA 118 - 1x18W

65050 PRIMA LED 1.4ft PC 3200/840 = suitable replacement for T8 fl. tube light fitting PRIMA 136 - 1x36W

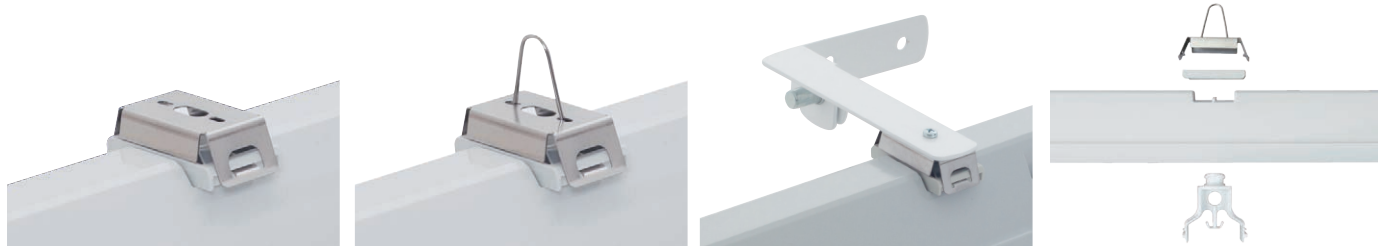
65460 PRIMA LED 1.4ft PC 6400/840 = suitable replacement for T8 fl. tube light fitting PRIMA 236 - 2x36W

65080 PRIMA LED 1.5ft PC 4000/840 = suitable replacement for T8 fl. tube light fitting PRIMA 158 - 1x58W

65490 PRIMA LED 1.5ft PC 8000/840 = suitable replacement for T8 fl. tube light fitting PRIMA 258 - 2x58W

LIGHT FITTING ATTACHMENT

- Directly to a ceiling or a wall with the use of screws and stainless brackets
- Suspension with the use of stainless hooks
- Attachment with the use of side hangers to the wall



LIGHT FITTING DETAILED VIEW

PRIMA LED

